

### Highlights

- For all types of metal and large diameters (> 15 mm)
- Very high surface finishes
- Slightly rounded corners
- Also suitable for manual polishing
- The embossed surface creates a beautiful, smooth and shiny surface
- Recommended for polishing materials < HV 600

Woven pad made of polyacrylonitrile acrylic wool fibers

## SAMBA-N

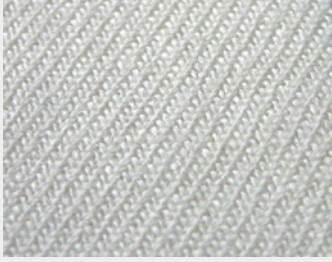
SAMBA-N pads are woven with polyacrylonitrile acrylic wool fibers. This anti-static polymer withstands light oxidizing agents, cold acids, solvents and fats. Its high moisture absorption (60 %) moderates the stripping effect. The entanglement of the fibers encourages the diamond grains to become embedded in the material, which is conducive to good polishing. The rectilinear construction of the fibers results in high-quality embossing on the surface of the pad, giving the workpieces their shine and brilliance. The thickness of the pad can result in slightly rounded edges. SAMBA-N is also suitable for manual polishing of small production pieces.

### Typical applications

Titanium gr. 5, steels, copper, stainless steel

Polishing pad	Base material	Hardness [Shore A]	Density [g/cm <sup>3</sup> ]	Thickness [mm]
ALUPOL-PLUS	Viskose	82	620	0,65
MAMBO	Poromer	65	814	1,50
QUICK-STEP	Polyamide	97	528	0,50
SAMBA-N	Polyacrylonitrile	87	840	1,05
STEP-PLUS	Cellulose acetate	96	720	0,65
STEP-PRO	Cellulose triacetate	96	770	0,65
SWING-PLUS	Viscose fibers	88	660	0.85

The data presented is a statistical representation for comparison purposes. The values are not necessarily representative of the COA specifications.



The rectilinear construction of the fibers results in high-quality embossing on the surface of the pad, giving the workpieces their shine and brilliance.



Pureon offers a variety of slurries in a wide range of viscosities and custom formulations to match SAMBA-N polishing pads. We are happy to assist you in finding the best suitable products.



Pureon offers a wide range of customized solutions. More information can be found on [www.pureon.com/products/overview](http://www.pureon.com/products/overview)

**Product specifications**

Base material ..... Wool fiber weft, woven, medium-hard; embossed top  
Shelf life ..... 12 months  
Diameter ..... standard: Ø 200 mm – Ø 400 mm  
non-standard: Ø 401 mm – Ø 1'300 mm

**Application recommendations**

Handling ..... Apply only to a clean, dry surface at room temperature. If an appropriate solvent, such as isopropyl alcohol, is used to clean the platen after a pad removal, allow the platen to dry completely and return to room temperature before applying a new pad. Solvents remaining on the platen or an unusually cold platen will lower PSA adhesion.

When applying the pad to the platen, peel the release liner from one edge of the pad. Fold liner back approximately two inches. Align the pad with the edge of the platen and adhere. In one continuous movement, slowly peel the remaining release liner off the pad while pressing the pad down on the platen. The application should be smooth and uniform with even pressure from the pad mounting tool (such as a flat disk or hand roller).

Do not try to reposition pads with PSA adhesive.

Storage ..... Product should be stored and transported in the original packaging. The product should be stored in temperatures between 10 °C to 24 °C (50 °F to 75 °F) and < 50 % humidity. Exposure for six (6) months or less to conditions between -17 °C to 48 °C (0 °F and 120 °F) and / or at relative humidity of up to 100 % will not impact the product performance as long as the release liner remains intact and attached to the PSA. If the product is exposed to temperatures and humidity outside the recommended conditions, it may still be acceptable for use. In all cases, the product should be allowed to return to normal room temperatures prior to use.

Disposal ..... Dispose of in accordance with all applicable local regulations.

**Contact**

**Pureon**  
sales@pureon.com  
www.pureon.com/sales-contacts