

### Highlights

- Innovative polishing pad combines lapping and polishing principles
- Surface finishes down to 1 nm Ra
- Material removal rates similar to soft metal lapping plates
- Provides excellent workpiece geometry and flatness, without edge round-off
- Dressable system, suitable for single-side and double-side machines
- Best results if used with water-soluble or oil-based diamond suspensions from Pureon

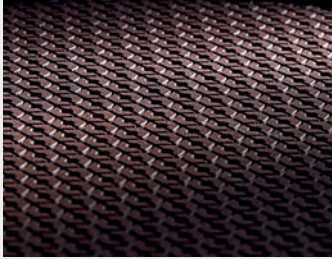
Composite polishing pad, copper-resin matrix

## IRINO-PRO-C

The novel IRINO-PRO-C composite polishing pad is closing the gap between lapping on metal plates and polishing on pads. It is most suitable for lapping and polishing of superhard materials such as sapphire, SiC, tungsten carbide, and ceramics. Combined with application-tailored diamond suspensions from Pureon, IRINO-PRO-C allows for high surface qualities and impressive stock removal rates at the same time. The polishing pad comes with a self-adhesive backing. As such, it can be applied to any existing metal carrier plate, which makes it very user-friendly.

### Typical applications

Stock removal or polishing of sapphire and ceramics



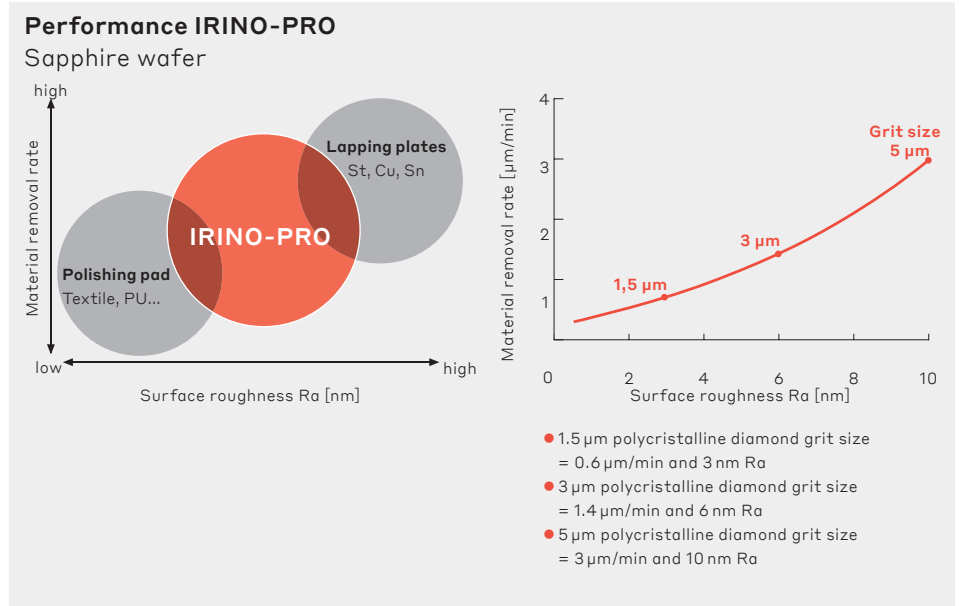
IRINO-PRO composite polishing pads are used with diamond suspensions. We are happy to assist you in the selection of the most suitable product.



Pureon offers a wide range of customized solutions. Get in touch with us.

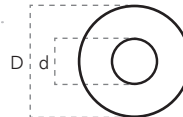
**Product specifications**

Medium-hard bonding  
 Matrix ..... Copper resin  
 Base ..... Polycarbonate, self-adhesive backing  
 Hardness ..... 60 – 65 Shore D  
 Layer thickness ..... 1.0 or 1.6 mm  
 Diameter ..... 200 – 760 mm one-piece, larger than 760 mm multi-piece



**Order information**

Order code ..... IRINO-PRO-C-1D265P-610 × 190 mm  
 Packing ..... 1 piece / box  
 Diameter .....



Custom-engineered pads are available on request.

**Design and working principle**

IRINO-PRO composite polishing pads consist of a polymer matrix with embedded metal powders. The addition of diamond suspension charges the IRINO-PRO pad with diamond particles. The embedded diamond grains facilitate stock removal on the workpiece. The continuous wear of the bonding over its service life prevents clogging of the pad. The patterned surface helps to improve suspension flow and exchange, even for double-sided machines.

**Contact**

sales@pureon.com  
 www.pureon.com

